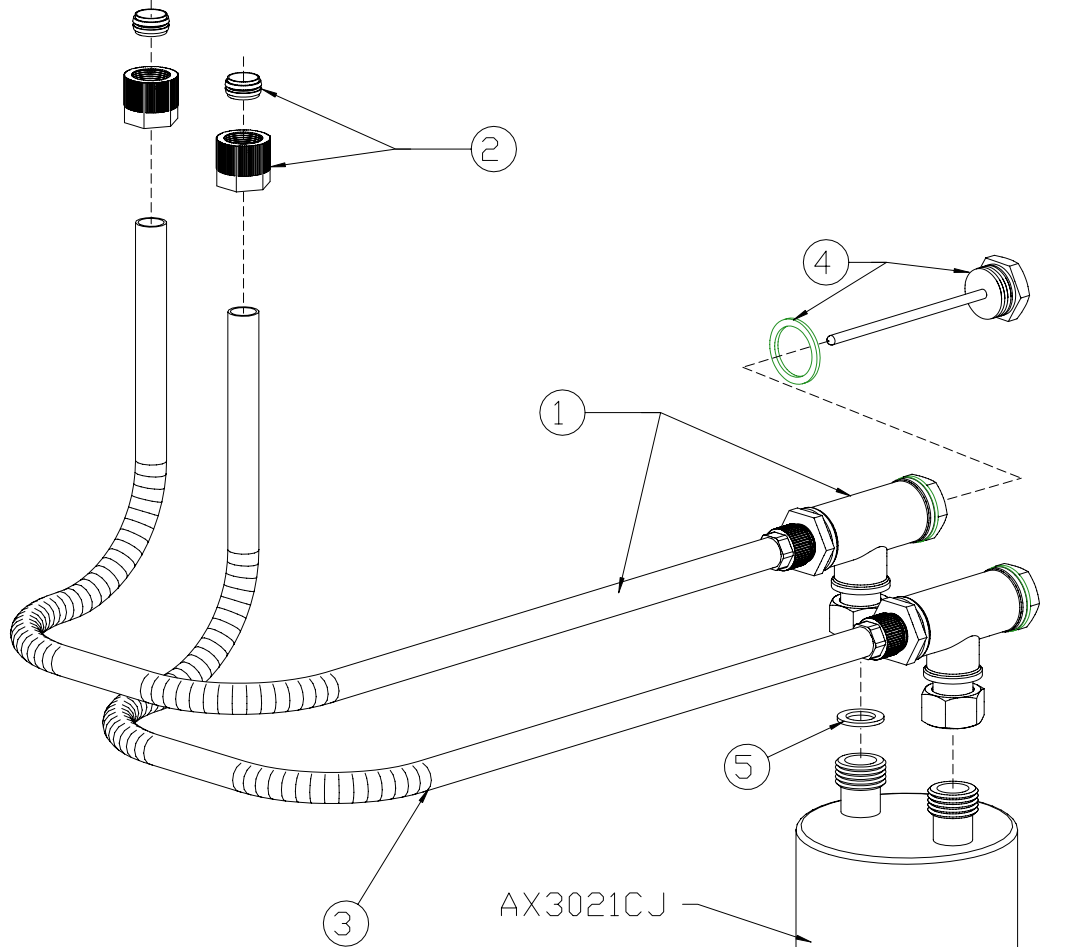


QTY.	PRODUCT	NEXT ASSY. DWG.	NO.	DESCRIPTION OF CHANGE	SCO#	DATE	BY
			0	NEW ISSUE		7/31/09	DSE
			1	Added item #5 - washer # 3911402		6/8/10	DSE
			2				
			3				
			4				

NO. AX3021CJ-ACCES
 SUPSDS.



Item	Part Number	Description
1	AX3021CJ-KIT	Includes two formed hoses, two Long Life water fittings with sacrificial anodes and two fiber washers #3911402.
2	AX3021CJ-F/N	Sold as a set, which includes two compression ferrules and two knurled nuts.
3	AX3021CJ-TUBING	Preformed replacement tubing, sold individually.
4	AX21/48-ANODE	Replacement sacrificial anode, includes sacrificial anode assembly and washer - sold individually.
5	3911402	Water fitting to tube fiber washer - sold individually.

TOLERANCES UNLESS OTHERWISE SPECIFIED
 FRACTIONS $\pm 1/64$ DECIMALS .X ± 1 .XXX ± 0.05
 ANGLES $\pm 1/2^\circ$.XX ± 0.1 .XXXX ± 0.05

THIS DOCUMENT IS THE PROPERTY OF RICHARDSON ELECTRONICS, LTD. AND SHALL NOT BE COPIED, REPRODUCED, USED IN THE MANUFACTURE OR SALE OF APPARATUS OR DISCLOSED TO OTHERS WITHOUT PERMISSION.

DO NOT SCALE DRAWING

Richardson Electronics, Ltd.

DRAWN	DSE	SCALE	NTS
ENG. MGR.		ENG. CHKD.	
ENG. MGR.		PRODN. APPD.	
MAT'L			
MAT'L. SPEC. NO.			
FINISH			
PROD.			

**LASER ACCESSORIES FOR
 TRUMPF LASERS THAT USE
 THE AX3021CJ / RS3021CJ**

NO. AX3021CJ-ACCES - 1 CHANGE 1